


 Search

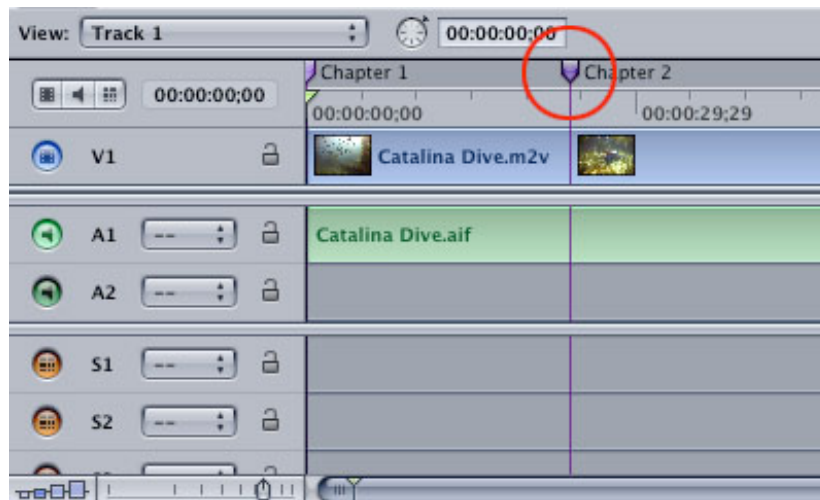
High Performance Video and Storage Systems

[About Us](#) | [Products](#) | [Solutions](#) | [Customer Service](#) | [Support](#) | [Financing](#)

[Home](#) | [QuickTips](#) | [DVD Studio Pro](#) | Importing a Marker List

## Importing a Marker List

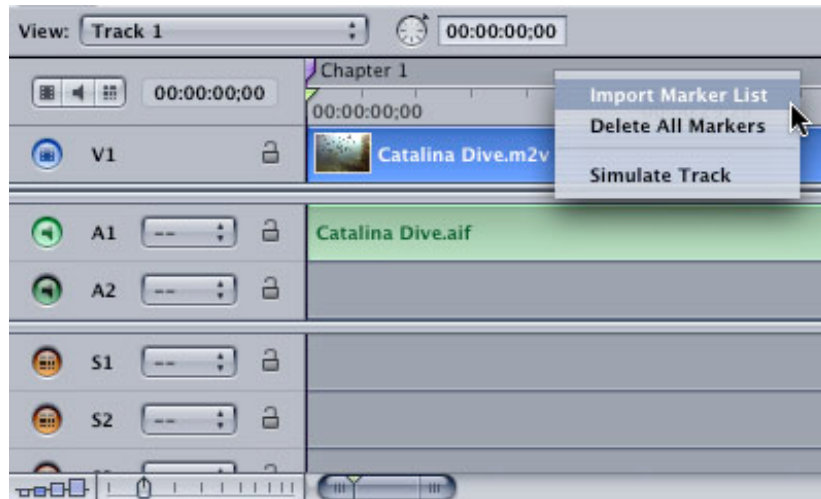
DVD Studio Pro allows you to set chapter markers directly in the track editor. You can do this by moving the playhead and hitting 'm' on your keyboard to set a chapter marker.



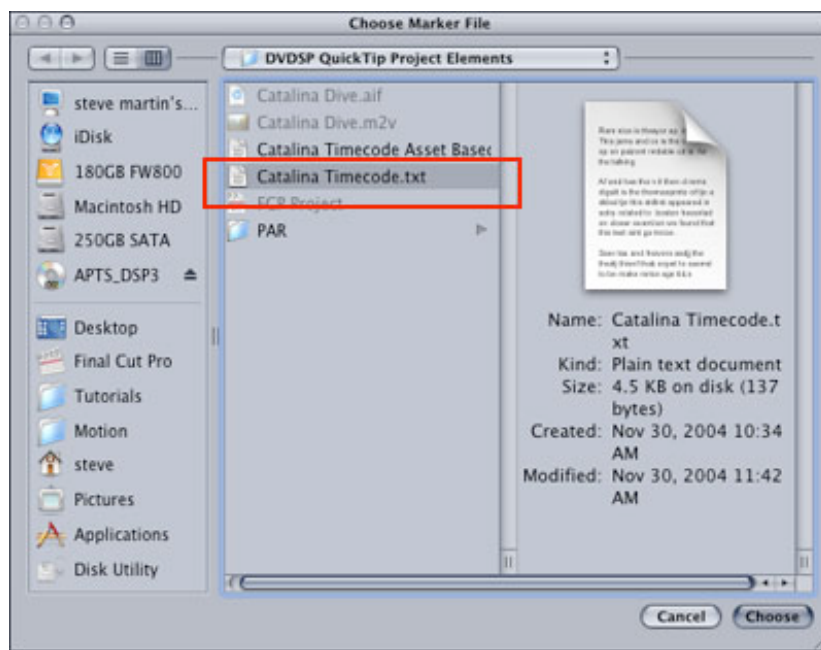
Of course this would be quite tedious if you needed many chapter markers. A great shortcut would be to import a tab-delimited text file that containing all your timecode references and your chapter marker names.



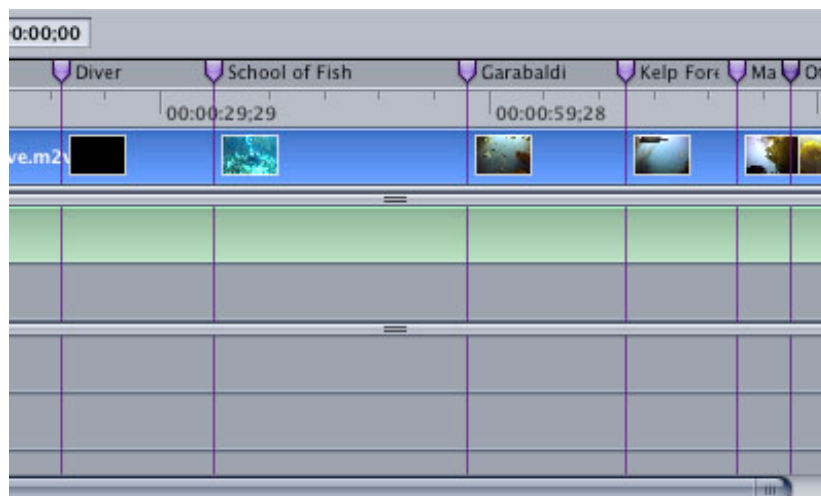
**1.** To import the text file, control or right-click in the gray space above the ruler area in the track editor. Additionally, you can right-click directly on the clip itself. Choose Import Marker List from the menu



2. Navigate to your text file and click 'Choose'

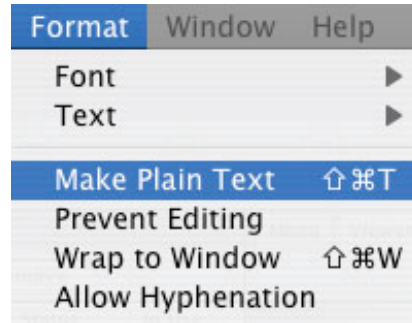


All the markers are imported and show up in your track editor.



There are a few things to keep in mind when creating your timecode text file

1. If you use TextEdit, you must convert the document to Plain Text. If you use Microsoft Word, you will need to save it as a Text Only document



2. You can separate the timecode values with a comma or the tab key. Just make sure that only colons separate the numbers - no semi-colons! (I found this out the hard way)

3. DVD Studio Pro defaults to Zero-Based timecode display. This means that the tracks always start at 00:00:00:00. If the timecode in your text file starts at 01:00:00:00, then your markers will show up in your track an hour later! To prevent this, just make sure the timecode values in your text file are zero-based, not asset-based.

4. Each Marker must be on a separate line

Now you can really give your interns something to do

To order on the web shop [promax.com](http://promax.com)  
 To place an order by phone, call (800) 977-6629

Hours: Mon-Fri 8:00am-6:00pm PST

For questions please contact [sales support](mailto:sales.support).

Comments, questions about [promax.com](http://promax.com)?

Please contact [webteam@promax.com](mailto:webteam@promax.com)

Copyright © 2006 ProMax Systems, Inc.



**[Subscribe and receive news and special promotional offers!](#)**